

VSF 

PROJECTS LTD

A BSE LISTED COMPANY FROM 1993

**A MULTI PRODUCT
FREE TRADE
WAREHOUSING ZONE
(FTWZ/SEZ) WITH ICD**





VSF PROJECTS LIMITED

**THE COMPANY HAS SETUP A MULTI PRODUCT FREE TRADE WAREHOUSING
ZONE WITH INLAND CONTAINER DEPOT IN ITS OWN LAND LOCATED
SY 782 TO 1236, ANKULAPATURU VILLAGE ,CHILLAKUR MANDAL.TIRUPATI
DISTRICT OF ANDHRA PRADESH-524412**

INDUSTRIAL CORRIDOR

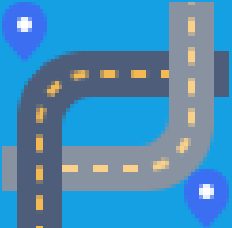


THE LAND IS LOCATED ON THE SOUTH SIDE OF ADANI KRISHNAPATNAM PORT AND KRISHNAPATNAM INDUSTRIAL NODE (KRIS CITY) IN CHENNAI BENGALURU INDUSTRIAL CORRIDOR AND VIZAG CHENNAI INDUSTRIAL CORRIDOR


CONNECTIVITY



VSF PROJECTS LTD



S.NO	TYPE	LOCATION	DISTANCE (KMS)
1	PORT	KRISHNAPATNAM PORT	24 KMS BY ROAD 15KMS BY WATERWAYS
2	RAILWAY STATION	GUDUR RAILWAY STATION	22KMS
3	AIRPORT	TIRUPATI INTERNATIONAL AIRPORT	105KMS
5	AIRPORT	CHENNAI INTERNATIONAL AIRPORT	150KMS
6	CITY	GUDUR	22KMS
7	INDUSTRIAL ESTATE	KALAHASTHI INDUSTRIAL ESTATE	75KMS
8	INDUSTRIAL ESTATE	SRICITY INDUSTRIAL ESTATE	90KMS
9	INDUSTRIAL ESTATE	RENIGUNTA INDUSTRIAL ESTATE	105KMS
10	NATIONAL HIGHWAY	CHENNAI KOLKATA HIGHWAY	15KMS
11	ENNORE PORT	CHENNAI	105KMS
12	RAMAMAIH PATNAM PORT	CHENNAI	134KMS





1) CUSTOMS CLEARANCE

THIS FTWZ HAS BUILT IN CUSTOMS OFFICE

2) ICD

THIS FTWZ PROVIDES ADVANTAGES OF ALL LOGISTIC OPERATIONS WITH INLAND CONTAINER DEPOT AND HUGE CONATINER STOCKING YARD

3) SMART LOGISTICS HUB

THIS FTWZ IS THE ONLY ONE WHICH CATERS THE NEEDS OF ANDHRA PRADESH , TELANGANA,CHATTISGARH & KARNATAKA.IT IS LOCATED IN KRISHNAPATNAM NODE IN CHENNAI BENGALURU INDUSTRIAL CORRIDOR AND VIZAG CHENNAI INDUSTRIAL CORRIDOR.





FREE TRADE ZONE



VSF PROJECTS LIMITED



GRADE A WAREHOUSE - I

Located within a certified FTWZ precinct, VSF PROJECTS LTD's Grade A Warehouse offers modern, high-performance logistics space engineered for multinational supply chains and asset-intensive operations.

The facility features high clear-heights, rigid floor slabs for heavy racking and forklift activity, with 33 dock-level loading bays, ample yard space for trailer marshalling, segregated clean and secure areas for value-added processing, and integrated office and customs clearance zones.

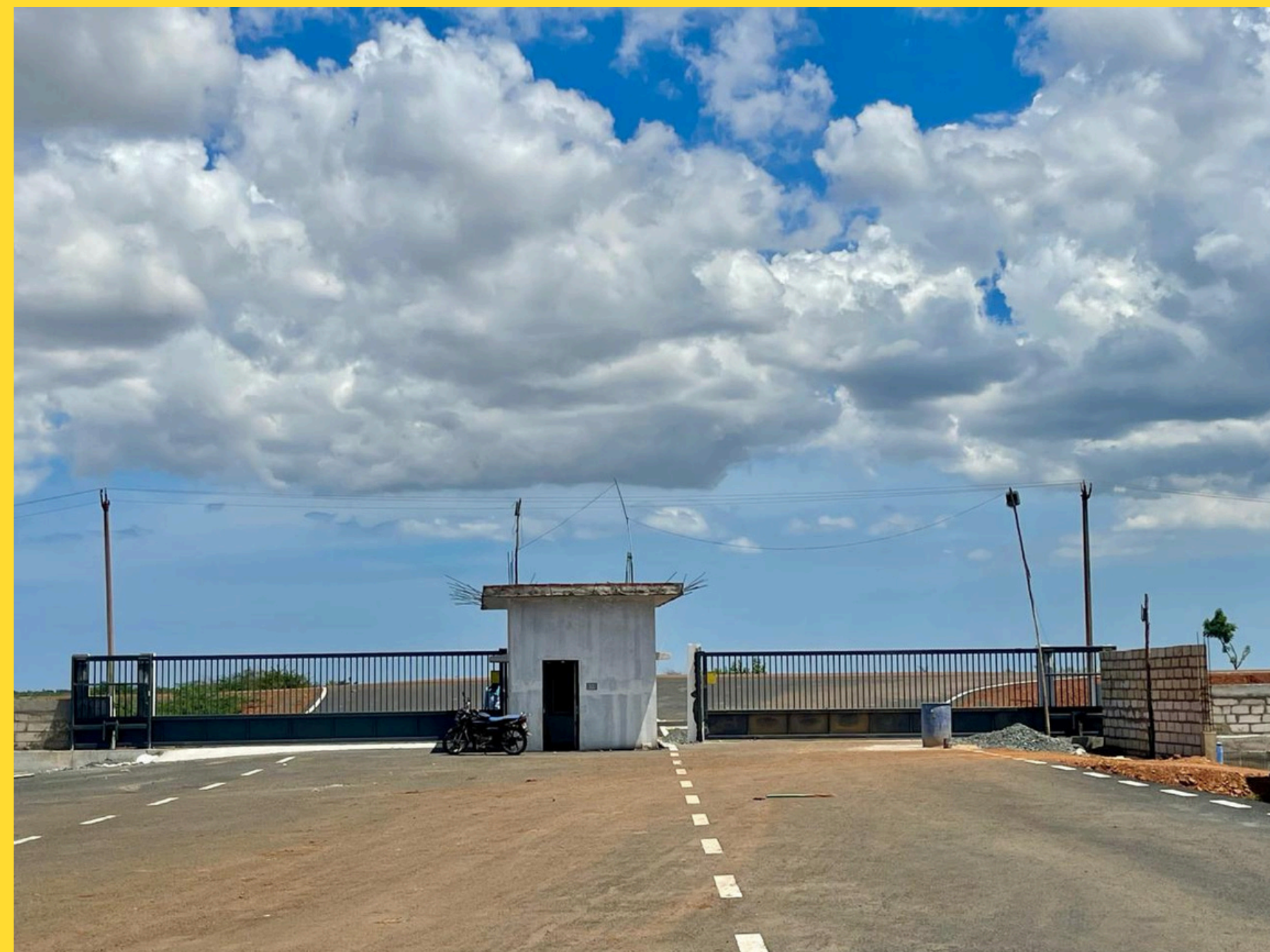
Built to international standards, the warehouse is supported by 24/7 access control, CCTV, fire detection & suppression systems, uninterrupted power with backup, and on-site utility connections to speed operational start-up. Being a Free Trade Warehousing Zone enables smoother customs handling for imports, exports and transshipment — making the site an ideal choice for trading houses, e-commerce fulfilment, pharma & healthcare warehousing, electronics, and high-value goods.

MAIN ENTRANCE



VSF PROJECTS LIMITED

A MAIN ENTRANCE WITH AUTOMATED SLIDING GATES HAS BEEN CONSTRUCTED AT THE FTWZ PREMISES TO ENSURE SECURE, EFFICIENT AND CONTROLLED VEHICLE AND PERSONAL MOVEMENT. THE AUTOMATED SYSTEM ENHANCES SECURITY AND FACILITATES SMOOTH ENTRY AND EXIT OPERATIONS





VSF PROJECTS LIMITED

ADMIN BUILDING

AN **ADMINISTRATIVE BUILDING** HAS BEEN CONSTRUCTED WITHIN FTWZ PREMISES TO ACCOMMODATE MANAGEMENT, OPERATIONAL AND SUPPORT STAFF. THE FACILITY SERVES AS THE CENTRAL HUB FOR ADMINISTRATIVE AND COORDINATION ACTIVITIES TO THE ZONE'S OPERATIONS





CUSTOMS BUILDING



A DEDICATED **CUSTOMS OFFICE** BUILDING HAS BEEN CONSTRUCTED WITH IN THE FTWZ PREMISES TO FACILITATE HASSEL - FREE CUSTOMS OPERATIONS ENSURING SMOOTH CLEARANCE, INSPECTION AND ADMINISTRATIVE FUNCTIONS FOR IMPORT AND EXPORT ACTIVITIES

Canteen & Vendors Accommodation

A CANTEEN BUILDING AND
VENDOR ACCOMODATION
FACILITIES HAS BEE
CONSTRUCTED WITHIN THE FTWZ
PREMIES TO CATER THE DAILY
NEEDS OF STAFF, WORKERS AND
VISITING VENDORS





Your Business Name

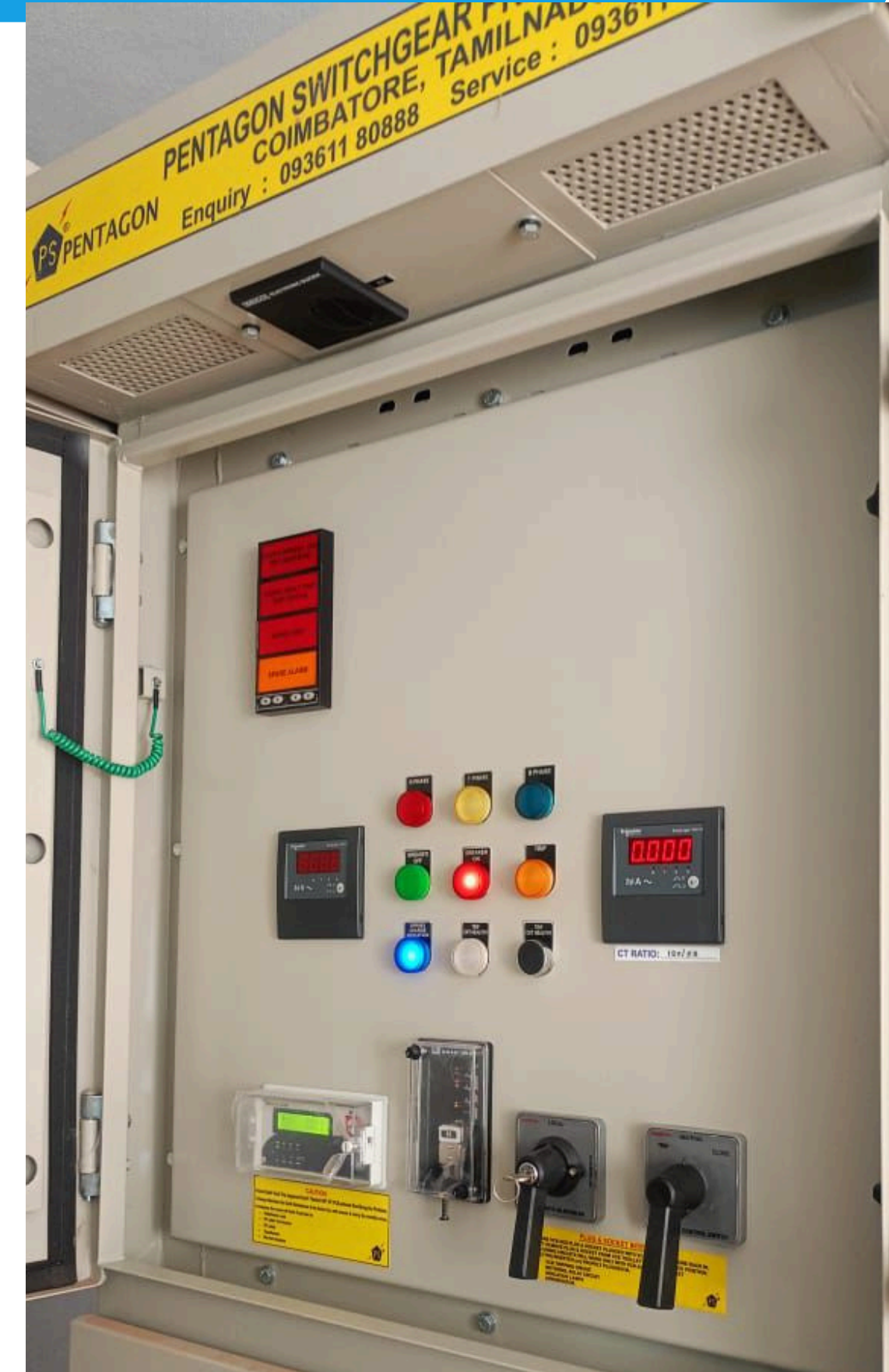
ICD

AN INLAND CONTAINER DEPOT (ICD) WITH 275 METERS LENGTH * 30 METERS WIDTH HAS BEEN DEVELOPED WITHIN THE FTWZ PREMISES TO FACILITATE EFFICIENT HANDLING, STORAGE, AND MOVEMENT OF IMPORT AND EXPORT CONTAINERS.

THE ICD IS EQUIPPED WITH NECESSARY INFRASTRUCTURE FOR CUSTOMS EXAMINATION, CONTAINER OPERATIONS



A DEDICATED ELECTRICAL PANEL HAS BEEN CONSTRUCTED. THE ROOM HAS BEEN DESIGNED AND BUILT IN COMPLIANCE WITH RELEVANT ELECTRICAL SAFETY STANDARDS AND PROVIDES DISTRIBUTION ACROSS THE FTWZ





TRANSFORMER YARD

Highlight 1

630 KVA TRANSFORMER
COMMISSIONING COMPLETED

Highlight 2

RELEASE ORDER FOR HT
CONNECTION OBTAINED FROM
SOUTHERN POWERN DISTRIBUTION
OF ANDHRA PRADESH LTD

Highlight 3

CEIG APPROVAL OBTAINED









VSF PROJECTS LIMITED

Erected a Sewage Treatment plant to treat the waste water generated from buildings ,canteens, restrooms and worker accomidation area to ensure the discharged water meets the prescribed norms set by Pollution Control Board and promotes sustainable water management with in the zone.

WWW.VSFPROJECT.COM

SEWAGE TREATMENT PLANT (STP)



Storm Water and Wastewater drains around the warehouse, buildings in the FTWZ is designed to efficiently collect and channel both storm water and waste water preventing water logging, structural damage and ensuring Environmental Compliance.





Our FTWZ Warehouse is equipped with Fire Hydrant Lines and Automatic Sprinkler Systems with a dedicated Fire Pump Room.



Market Opportunity & Demand

Smart logistics park concept

Cutting-edge automation and AI-driven efficiency

Strategic connectivity with ports, highways, and rail

High ROI and strong market demand for logistics solutions

Streamlined customs clearance for
hassle-free international trade.

- **Rapid growth in global and regional logistics demand**

- **Increasing need for automated warehousing and container handling**

- **Demand from e-commerce, FMCG, and port-based industries**

- **Competitive advantage: location, automation, and scalability**

Next Steps & Current Status



VSF PROJECTS LIMITED

The application for Consent to Operate (CTO) has been submitted to the Andhra Pradesh Pollution Control Board (APPCB).

- The process is currently under review, and all supporting documents such as STP details, drainage layout, and fire safety installations have been submitted as per the prescribed norms.
- Once CTO approval is received, the FTWZ will commence full-fledged operations in compliance with environmental and safety regulations.



WWW.VSFPROJECT.COM

The FTWZ is actively seeking logistics operators, exporters, importers, 3PL service providers, and other eligible entities interested in leasing warehouse spaces and ICD (Inland Container Depot) facilities within the zone.

- Grade-A warehouse with 3,60,000 SFT is available with custom-bonded , equipped with fire hydrant and sprinkler systems, STP, internal roads, and drainage infrastructure.
- The ICD within the FTWZ provides efficient customs clearance, container handling, and bonded storage facilities, offering a one-stop logistics hub for international trade.